

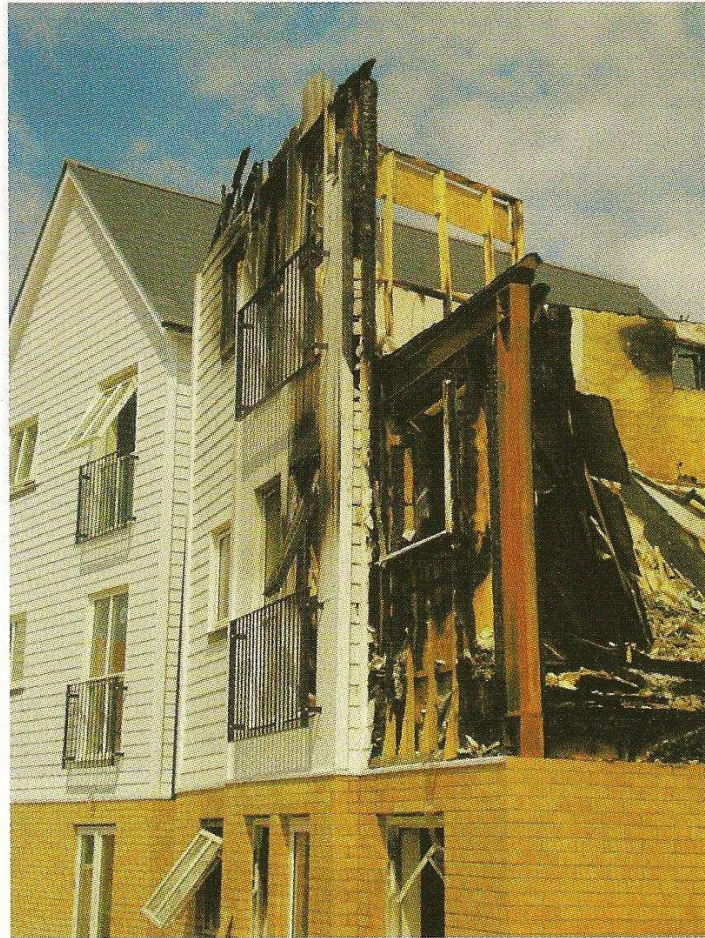
NEW BUILDS EXTENSIONS RENOVATIONS CONVERSIONS MODERNISATIONS

SelfBuild & design

THE ESSENTIAL MAGAZINE FOR HOME BUILDERS & RENOVATORS

www.selfbuildonline.co.uk

What's New?



Siding contains development blaze

HARDIEPLANK FIBRE CEMENT siding has been credited with preventing the spread of fire at a development in Ashford, Kent, after an arson attack destroyed an apartment building. Vandals broke into the development and started a fire in the stairwell which was still under construction. The building's HardiePlank siding blocked the fire from spreading to other buildings, among intense flames which required 40 firefighters to control. The Fire Service's Crime Scene Investigator who visited the site was very impressed with the siding's performance.

jameshardie.co.uk