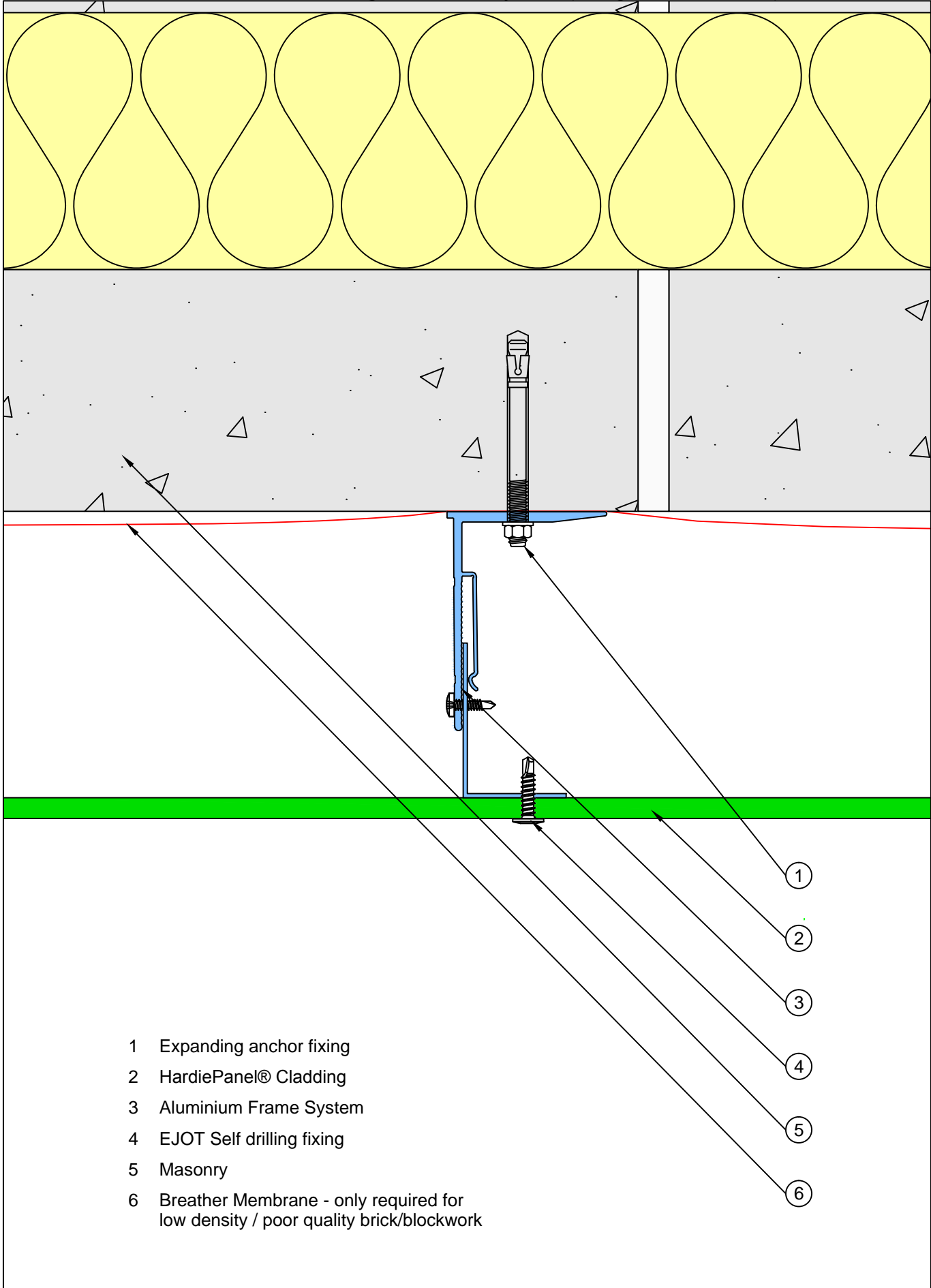


HardiePanel® - Framing onto Masonry Wall (straight flat substrate)



- 1 Expanding anchor fixing
- 2 HardiePanel® Cladding
- 3 Aluminium Frame System
- 4 EJOT Self drilling fixing
- 5 Masonry
- 6 Breather Membrane - only required for low density / poor quality brick/blockwork