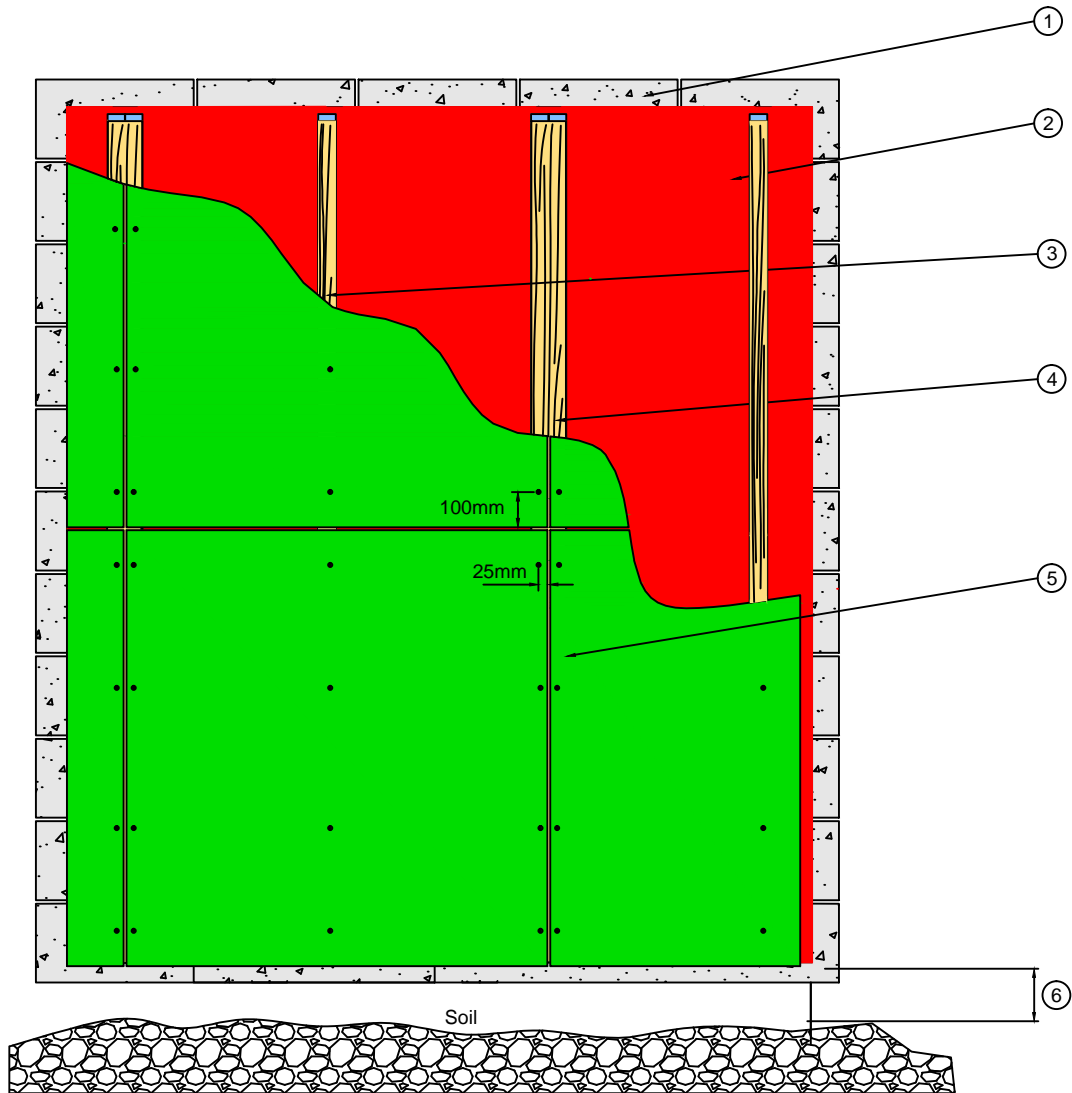


HardiePanel® - general arrangement



- 1 Bricks / Masonry
- 2 Breather membrane - only required for low density / poor quality brick/blockwork
- 3 Vertically installed timber battens 50mm x 50mm
- 4 Vertically installed timber battens 50mm x 100mm
- 5 HardiePanel® cladding
- 6 150mm Min.